

Our apologies

The editorial staff wishes to apologize for a grave typographical error in the Winter '88 edition. Our generous benefactors Annette and Clark spell their last name Meinhart, not Minehart.

Keep in touch

Why join the Cougar Rowing Association? For the *Pull Hard*, oracle of Cougar Crew news. It keeps you in touch with old crew buddies and with what's currently happening at the river: coaching changes, schedules, results.

Cougar Crew is still in the surging "first growth" of a fledgling boat club. Facilities, equipment and staff continue to expand and improve, the Endowment fund is building, and most importantly, crews keep getting faster.

So how are you, living 300 or 3000 miles away, going to keep track of it all? Through the pages of the *Pull Hard*, of course. Best of all, you won't simply be reading about it. Your hard-earned ten-spot makes you a part of the ongoing saga of Cougar rowing—a supporter as well as a spectator.

The *Pull Hard* may do more than inform and amuse you. It just might tempt you to rediscover old pleasures. Like tailgate parties for instance, where the relaxed, colorfully disorganized atmosphere of a regatta rejuvenates your body and brain. The perfect situation for bumping into old friends and tuning up crew stories about Fox the Cox and The Time We Almost Waxed the Huskies.

Ten dollars brings you a year of the *Pull Hard*. A year of something to be proud of, something to laugh about, something to look forward to. Send your check today. ▲

CRA to CRF

CRA stands for Cougar Rowing Association. Recently, for incorporation purposes, the name was changed to CRF: Cougar Rowing Foundation. Either way, the goals and functions of the organization remain the same.

The CRF is comprised of Cougar Crew alumni. Any alumni who wish to become involved are welcome to join. Our two main functions are to publish and distribute the *Pull Hard*, and to direct fundraising efforts toward the Endowment Fund.

The *Pull Hard* serves as a link for all of Cougar Crew: current athletes, alumni, contributors, and parents. Current athletes may obtain copies from their coaches.

Once an athlete graduates, their name becomes active on the mailing list. Often this address is actually their parent's permanent home address. Please update your address as soon as you're established. Gradu-

A word from Struckmeyer

Unexpected contributions keep coming in to the rowing program. Yesterday, (Jan. 13) Marj received a phone call from a gentleman in Pullman who thought the tires on the yellow van were not very good and gave us five used tires that are better than those that are on the vehicle. In addition, he is going to give us six more with less than 500 miles on them when he puts new radial tires on his own van. With the contribution were a tire mounting setup and balancing device. Marj said he may also give us some saws and additional tools for the shell-house. He will be retiring from the Department of Psychology this year and may be looking for something to do.

On Jan. 11, 1988, we received another invitation to race in Istanbul in an international regatta. The dates for this event are May 27, 28 and 29, one week after the PAC 10 regatta in San Francisco. We are looking at airfares to go from San Francisco to Europe and then Turkey. We will be ordering lapel pins which we will use to raise money for those who will be going. We will have a lot of pins available at Class Day and our other spring regattas. We plan to sell them for \$10 each. If each oarsman sells 100, he or she should have their trip mostly paid for. Our hosts in Turkey will provide eight days of room, board and transportation while the team is in Istanbul. This date is much more feasible for the entire team since we will still be fast and all participants will have eligibility cleared. We may take a men's eight or two and perhaps a women's boat. They have also invited the women's volleyball team.

I have received calls from several old alumni about Class Day this year. It appears at the present time that Tim Richards from Hawaii and Mitch Wainwright from

continued on insert.

ates receive the *Pull Hard* free for one year, after which the subscription is \$10 per year. This money is used only for publication, mailing and related CRF activities. Subscription renewals are solicited each year in the Spring.

Maintaining an up-to-date mailing list is a never-ending process. If you have a current address for any Cougar Crew alumni, please send it.

After publishing the newsletter, the main goal of the CRF is to promote the Endowment Fund for rowing at WSU. The fund has existed for some time, but we are just now beginning a unified and organized effort to enhance it. All fundraising efforts will be directed solely toward the Endowment Fund Drive, which will be based on an annual schedule. Watch for related information in the next *Pull Hard*, and for a yearly fundraising letter.

If you want to be involved in CRF activities, come to the annual meeting at Class Day (4:00 in Wilson #13), or call Jim Rudd at (206) 874-5852. ▲

—Tammy Boggs

Join us for Class Day '88

The annual gathering at the river is scheduled for March 19 this year, and will include elements old and new.

Among familiar and time-honored activities will be the Class Day Races, scheduled for 11:00 a.m. The races will be followed by the annual general meeting of the CRA, including nomination and election for a seat on the board of directors. The position is open to any crew alumnus. Bring your candidate and prepare your lobby. More importantly, bring your ideas for improving CRA performance. The meeting is at 4:00 in Wilson Hall, #13.

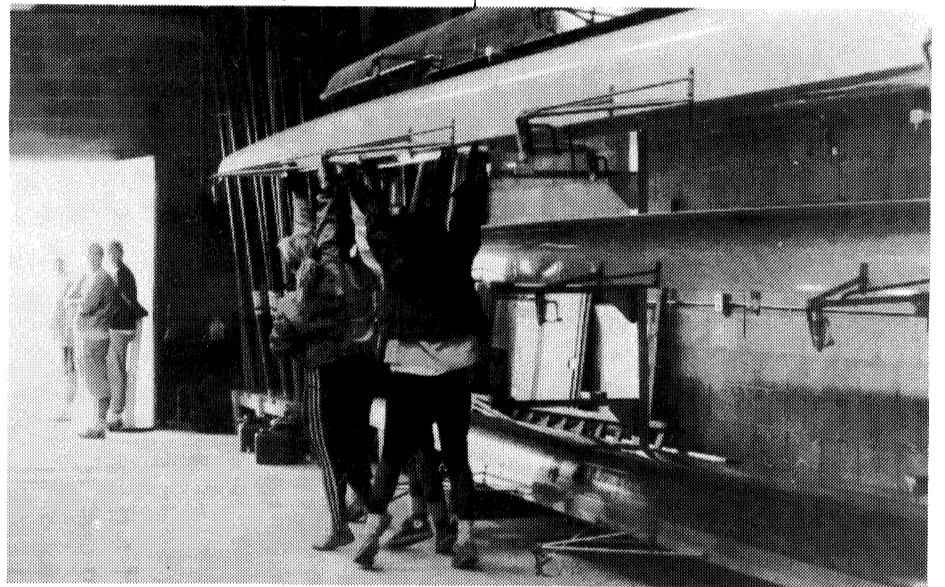
A new activity this year is the

Alumni Rehabilitation Row. This is a recreationally-oriented, not-for-physical-profit event to enable us to remember the fun part of rowing—leaving the dock and coming back. Without the onus of competition. Hear, hear! This activity to occur between the hours of 9:00 and 10:00 a.m.

Finally, of course, we will put on our finery and gather for the Class Day Banquet. If you need childcare for the evening, call Doug Engle (509) 334-1530.

The banquet will be held at Cavanaugh's Landing in Moscow, Idaho. Social hour begins at 6:30 p.m. with dinner at 7. ▲

Conibear or Cougar Crew? Hint: boattracks designed by Steve Porter, built by George and Brad Stivers.



Enthusiasm helps boost CRA endowment drive

By almost any measure, the '87 Endowment Drive was a success. More individuals than in any previous year were involved in the drive—both in the planning and execution, and in the most important part: contribution. Our average contribution size rose significantly, and we more than doubled, in fact almost tripled, our performance of any previous year.

Why the sudden jump in participation? Nobody can say, precisely, but there's no harm in hazarding an educated guess or two.

The most important reason, the enthusiastic response of the crew community, is the most difficult to assess. Somehow a handful of people have got it into their heads that something exciting and worthwhile is happening at Wawawai landing. We gaze at the spectacle, week by week, season after season, year after year. What we see, we apparently like, and we want to be part of it.

A simpler reason is that we were asked to be part of it. Not with a lot of fanfare or hoopla. Not with inflated promises or groundless hopes, but with a clear-eyed sense of what each of us can do, and what we must do, if what we are watching is to last and prosper indefinitely. Each of us knows that

good vessels are often fragile, and we do not want this one to founder on the reef of indifference.

Last, we come to the matter of organization and leadership. It should be clear by now that the alumni of Cougar Crew have a sense of direction and purpose solid enough to justify our confidence. What the Endowment Fund offers is nothing less than the tangible reality of a reliable income for the crew. The next question will be the matter of its size. ▲

Endowment Contributions by Class:

Graduating Year	Dollars Contributed	Number of Contributors
1973	100	1
1974	100	1
1975	300	4
1976	790	2
1977	430	6
1978	175	4
1979	870	8
1980	720	6
1981	1,080	7
1982	200	3
1983	0	0
1984	175	3
1985	0	0
1986	75	2
1987	0	0
Independent (no class)	550	5
Totals:	\$5,565	52

CLASS DAY
March 19

**Address correction requested
Return postage guaranteed**

Cougar Rowing Foundation
17A-6250-2349
B-19 Compton Union Building
WSU
Pullman, WA 99163-9986

Feb
88

NONPROFIT ORGANIZATION
U.S. POSTAGE
PAID
PULLMAN, WA
PERMIT NO. 1

1987 Contributors

First a note of apology to those who were left off last issue's contributors list. Please forgive us.

Tom and Debra Anderson
Mike and Sandy Buckley
Sherry and Darwin Cook
John and Zandra Hensel
Craig and Linda Illman
Cindy Robinson (Taylor)
ONB Corporation, Spokane

The following people contributed to the 1987 Endowment Fund Drive:

Gold Oar (\$151+)
Arleen and John Bergstrom
Sheri Bodman (VanCleeef)
Sue Emsdorff and Jim Pierce
Jim Flynn
Susan Ganz
John and Zandra Hensel
Mike Kimbrell
Andrew Kirk
John Lafer
Tim Malkow
Peggy and Steve Porter
Tim Richards
Silver Oar (\$50-\$150)
Eric Anderson
Tom and Debra Anderson
Blaine Beardley

Rich & Renee Bosco (Beauchamp)

Mike and Sandy Buckley
Sherry and Darwin Cook
Doug Engle
Al Fisher
Cheryl King
Mike Pabisz
Kathy Randall
Kari and Steve Ranten
Rich Ray
Diane and Jim Rudd
Donald C. Schmick
Kash VanCleeef
Jim Verellen
Ray and Jeannie Wittmier
Crimson Oar (to \$50)

Bob Appleyard
Mr. & Mrs. E.S. Buringrud
Tammy Boggs
Lisa Coble-Curtis
Tammy Cook
Roger Crawford
John Delong
Gene Dowers
Jane and Elvin Ericson
Chris Gulick
Craig and Linda Illman
Tom Kratzke
Ingrid Jennings-Borroz
Rich Lewis
Alan A. Mackenzie
Andrea Moore
Brad and Martha Sleeper
Margaret Staehel

Cindy Robinson (Taylor)

Ted Russell
Sue VanLeuven
Steve Vassey
Anita VonOppenfeld
Steve Wells
Dave Yorozu
Tim Zeiler

Donating through the WSU Foundation in 87:

A.L. McAlister
Fern Cramer
John and Zandra Hensel
Susan and Stanley Oas
ONB Corporation, Spokane
Clark and Annette Meinhart
Robert and Patricia Rollman
Cynthia and Thomas Russell
Dr. Arthur B. Sachs
Gwendolyn Saladin
Alvin and Lynn Schmidt
Donald C. Schmick
Marshall Warner

Many thanks as well to the friends and parents who donate directly to the Crew. Their time, effort and resources never reach the records of the CRA.

Cliff Arney
Valley Marine (Bryant Corp.)
WSU Parent's Association
A.L. McAlister
Riley's Inc.
Donald & Lily-Ann Satterlund
Brett Purtzer and Kim Heggerness
George and Brad Stivers

You Tell Us

The CRA wants to hear from you. Is there life after rowing? If so, tell us something of its quality. Hath it any particular relevance or romance? Hath it produced a spouse, or reproduced the species? Do tell us what you know that we don't.

Copy deadlines: 1/14/88, 5/1/88, 8/1/88, 10/13/88

Publication dates: 2/14/88, 6/4/88, 9/3/88, 11/13/88

Mail Pull Hard material and dues (assuming you want to read yourself in print) to:

Cougar Rowing Association
1319 Lei Garden Road
Burlington, WA 98233

Pullhard

Editor: Kari Ranten
Contributing Editor: Rich Ray
Graphics: Kathy Randall
Mailing List: Craig Illman



Preparing the sacrifice. Some things never change.

Dinner with the 'Captain'

On Saturday, October 10, a small Garcrewco coterie gathered at the Struckmeyer residence for the explicit purpose of having dinner with the Captain. Present, in addition to Ken and a pair of overscale Golden Labs, Cassie and Jenny, were Steve Vassey (82-86), his friend Char, Doug Engle (75-79), Kathleen Randall (77-80) and Flip (76-80).

We convened after a blustery day on the water and a disastrous football loss to Stanford in the homecoming game. Someone congratulated Ken on his construction of a set of new boat stretchers—folding units of bent electrical conduit and rubberized canvas slings. What, we wondered, was the fate of the wonderfully rickety old black wooden stretchers with their flattened fire-hose slings?

Cap: Burned 'em. I took 'em apart and burned 'em. They were so dry I just passed a match over them, and—poof!

The Captain's laughter, a hearty, booming cackle, swam up from the depths of his gigantic frame and filled the room. Someone else asked about the latest news on the floating launch house.

Cap: The big thing now on the floating boathouse is that we were going to put those pilings in to support it, you know? Well, the Corps of Engineers informed us that the state Shoreline Management Act said that there are only two thirty-day "windows" a year that they would allow pilings to be put in the bottom of the river. So the last time we visited them this summer they said "we'll drop the river for you and you can just scoop out the riverbank. You don't need any permits from anybody to do that."

Doug: Scoop out the bottom of the river?

Cap: Yep. We would need permits from four different state agencies and two federal agencies to put two pilings in. But they'll drop the river for us so we can scoop out six or seven feet off the bottom and move the

shoreline, and we need no permits at all. (Laughter.)

Flip: How many zillion acre-feet of water are they going to have to lose in order for us to dig our hole?

Cap: Well, you know, about three weeks ago they dropped the river three or four feet, then they brought it right back up again. They told us that when we give them the "window" of when we want that thing dropped. . .

Flip: Is that a window of vulnerability or a window of opportunity?

Cap: It's the window to get all the dams on the whole Columbia river set up to take their overflow against when they drop this one.

(Laughter.)

Cap: They need to have that thirty days in advance so they can set up, from Bonneville up, all their flow charts and their generation charts so that when they drop Lower Granite so we can dig out our hole, that we don't need any permits for it. . .and they'll hold it down for five days!

(Long laughter.)

Kath: Just take a backhoe down there?

Cap: Yep. . .just scoop it out.

Jenny: WOOF!

Flip: Does Jenny swim?

Cap: Do fish have lips? Last fall, the first week or two we had Jenny, we were videotaping a practice—we were out in the middle of the river down by the dam. Plop! In the river she goes. And so they're running the video camera, and I'm leaning over the back end of my boat with my butt up in the air, trying to get Jenny back on board. And she's just swimming around having a good old time. And of course Cassie is running around the deck, barking like mad, and the oarsmen are all just sitting there, thinking it's the neatest thing. . .

Dinner was duly served: a huge stainless steel mixing bowl full of steaming seafood fettuccini, a platter of

very rare London Broil, three bottles of white wine, large salads and the rising melody of Bolero on the stereo.

Doug: Are you playing much basketball this year?

Cap: It was so unenjoyable last year that I just don't even have any desire to play.

Kath: Why was it so unenjoyable?

Cap: The kids we had in the black and white shirts weren't calling good games. People thought it was the championship of the world—they were punching each other out. . .

Doug: Were these faculty teams?

Cap: My team was all faculty, but we played the Campus Police, the City Police, the Fire Department. . . The problem was that some of the officials were friends of the Policemen, so they didn't call a very good game. See, when you're a slim, trim, svelt player like I am, you can just look at somebody and you get called for a foul, but you can get chopped anywhere they want and you never get fouled.

Steve: That's because you're so big!

Cap: I know. Me big and strong. Me can take that. But me a wimp.

Doug: Are you playing at noon anymore?

Cap: That's becoming less enjoyable as well. I stopped playing with this one guy who calls every little picayune thing on the court. When I get the ball he calls me for travelling. . .and he's the worst traveller of anybody on the faculty. He's rather vulgar and rather abrasive and according to him, he's not travelling. "I AM NOT TRAVELLING!" And if you insist on it long enough, the next time he comes down the court he'll run over you.

[What, dear reader, do you suppose is the likelihood of anyone "running over" a six foot six, two hundred and eighty pound man?—ed.]

Dinner will be concluded in the next issue.

Men's Commodore's Report

Writing this update is difficult with my shaking hand. Today we took the shells down to the river on roads that were a solid sheet of ice. Struckmeyer's masterful driving saved the day. I think he lost ten years and ten pounds on that twenty mile trip. A big storm is expected tonight and we could not leave the boats sitting outside on campus. The boats were on campus for the annual boat repair in the Stock Pavilion at which there was a lack of direction and motivation due to Aaron Sharp's absence. We had to tighten up the old boats as we will have roughly ninety men hitting the water in about a month.

At the moment workouts continue in the mat room. Ole Jorgenson has found a new amusement for us—stairs in the fieldhouse. Snow and ice no longer provide an excuse to avoid stairs.

We are also practicing for the up-

coming Casino Night. It will be held on March 4th & 5th at the Oriental. The team is getting good at Blackjack. By presstime we will have held our annual Erg-A-Thon during the OSU basketball game on January 21. The fundraisers are especially important this year as the team has received invitations to the Crew Classic on April 2nd, and a regatta in Istanbul, Turkey, on May 27th.

Struckmeyer can't wait until we get onto the water so he can play with the Reinell cabin cruiser donated by Cliff Arney. He will have a refrigerator to keep his Coke cool.

Just two more notes. Class Day is March 19th. Everyone's invited to come see the newly wired shellhouse and all its lights. Also, we would like to welcome our two new coaches, Thad and Jess O'Dell. ▲

— Ernie Iseminger

Struckmeyer

continued

Denver will be flying in.

We have received invitations for the heavies and women's varsity to race in San Diego this year. With the invitations they also promised \$1,100 for each of those teams for subsidy. At this time, we are considering taking the women's varsity, novice and junior varsity. We are also considering taking the men's heavy and light varsity, heavy and light junior varsity, the freshmen and a novice eight. I truly believe that taking these boats will be beneficial to the entire program. In addition, I believe that we will do very well

with them. We may need some help for some individuals.

Ken Abbey continues to be a pivotal contributor to the program in many ways. Without his efforts on behalf of the program, we would not be where we are today.

We all believe this year has the potential to be one of the finest for the men and the women in the history of the crew. As you can tell, we have a very large turnout and the enthusiasm and work on the part of a lot of athletes has many of us very excited. Now we just need the help of the weather and a bit of good luck. ▲

1988 Racing Schedule

March 19	Class Day	Pullman
March 26	Fawley Cup GONZ-WSU, PLU, UPS	Spokane
April 2	San Diego Crew Classic	San Diego
April 9	WSU at UW	Seattle
April 16	WSU-UPS, PLU, WWU	Pullman
April 23	Tri-Cities Regatta WSU, OSU, UPS, PLU, GONZ, WWU, SPU	Richland
April 30	Opening Day	Seattle
May 21, 22	Pac 10's	Sacramento

photo contest

The Pull Hard staff is pleased to announce a photo contest open to all. The purpose of the contest is to encourage photographers to train their lenses on Cougar Crew. Thus the only restriction refers to subject: it must relate to rowing at WSU. Please send photos along

with a description of the shot (including names of persons in the photo) to: Photo Contest, c/o 1319 Lei Garden Road, Burlington, WA 98233. Winner will receive \$25, and photo will be featured in June PH. Deadline for entries: May 15.