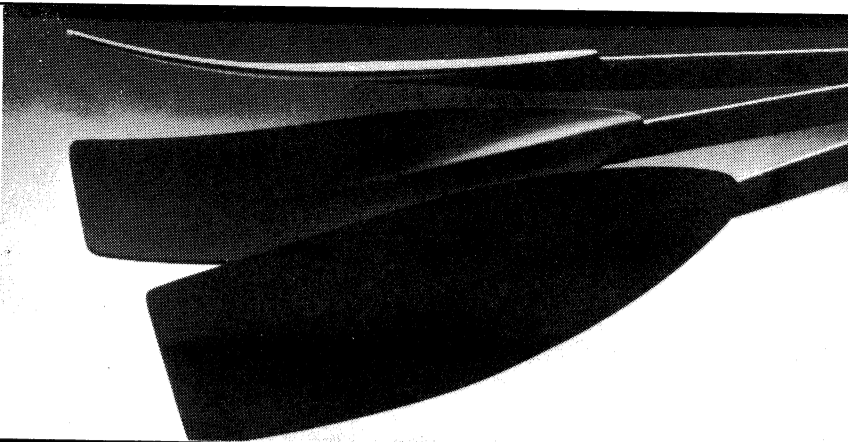


# THE PULL HARD



WINTER 1988

Vol. V, No. 3

Published by the Cougar Rowing Association  
for alumni and friends of the Cougar Crew

## Crew receives largest gift ever

1987 will probably stand in Cougar Crew record books for some time to come as the year of the gifts. In addition to excellent gifts of equipment, facilities and funds, the crew has just been given 125 acres of prime Palouse farmland. The land has been deeded to the WSU Foundation for the sole benefit of the crew.

Annette and Clark Minehart of Sagle, Idaho, are retired WSU employees and longtime crew enthusiasts. Annette worked as head of Faculty Personnel, while Clark was in charge of Stores and Supply in the College of Engineering. Both worked for the university for many years, and came to admire the spunk and determination of the rowing team. So much so that they decided to bequeath a parcel of land no longer useful to them.

Because the property was still under mortgage, a portion of the sale will be used to pay off the balance. Net should be around \$78,000. Negotiations are presently underway with an interested buyer.

The Mineharts have requested that proceeds be put in a separate endowment under their name but have placed no restrictions on use. As with the existing endowment fund, half the interest income will be sown back into the account and half will be available to the crew.

Anyone wishing to write a letter of thanks to the Mineharts can mail their letter in care of: Jim Rudd—CRA President  
215 Southwest 327th Place  
Federal Way, WA 98023

## Crew races in Head of Spokane

The crew raced in good weather over a three mile course against Gonzaga and Edmonton universities. The results were good, despite the protestations of coaches who viewed the race as a "learning experience." "We are not here to win" said assistant coach Chuck Purnell.

The women were strong across the board, finishing first in four of six events, including a win for the open eight. The novice boat, coached by Patty Culleeny and Aaron Sharp, took second and third in the eight, but won both the novice light and open fours. "I'm pleased—we have two eights and a four and we expect fast boats in the spring" Sharp said.

The novice men, coached by Mike McQuaid and Chuck Purnell failed to win the eight, but took second and third. Chuck Purnell said "We have three eights of novice and no one is quitting. They've rowed well together considering the large turnout." Purnell also expects "fast boats in the spring."

Ken Struckmeyer may not have been in Spokane to win, but apparently he couldn't help himself. The heavy eights took first and second, the light eight took first and the women's varsity eight (also in Struckmeyer's charge this season) took a first as well. "We had an excellent fall practice. Enthusiasm is high and we have a positive outlook. The lights will be challenging for Pac-10 champs, and the heavies should make the finals."

That sentiment was echoed by Ernie Iseminger, men's commodore and stroke of the heavy eight: "Top six. You heard it here first." He attributes the team's high hopes to the record turnout and large coaching staff. "No one is quitting, despite McQuaid's torturous 5:30 a.m. workouts." He also credits

*Continued on back.*

## Women's Commodore's Report

WSU's women's crew team opened and closed the fall season with a narrow victory over a slow University of Alberta Varsity 8. We barely won by a lot of hard work and a never die attitude.

The women suffer the loss of an experienced and inspiring coach and six out of nine rowers of last year's Varsity 8. This, coupled with the small and inexperienced second-year oarswomen makes this season hard to predict.

The varsity team presently consists of fifteen young and talented athletes, some more athletically inclined than others. During fall practice on the water, we were coached by Ken Struckmeyer whose guidance and instruction we are most thankful for. Basically, we're short on talent this year. With only three varsity women returning, but long on heart and hard work with some new oarswomen contributing a lot to the team. The potential exists for medals in the open and light four categories but for the sake of earning the most points, we will perform in eight-oared shells.

As always, the women's crew team has a lot of courage. Under the instruction of Ken Struckmeyer, we row with the men each day thus meaning that we often times row by ourselves. This makes our practices self-



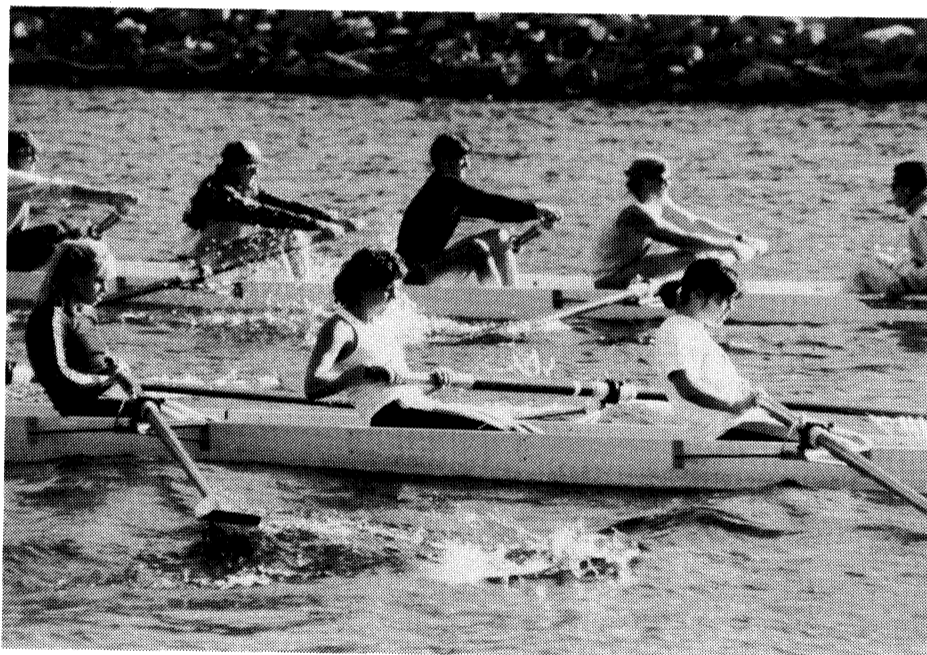
*WVB Launching into October sunlight.*

motivating.

In closing, we are working as hard as we can to make our boat a competitive one yet again to create a tradition for WSU women's crew - placing in the top 6 in the Pac-10.

See you at Class Day! ▲

—Pam Ware



## Men's Commodore's Report

We were pleasantly surprised by the interest shown at the annual fall orientation meeting. In fact, initial turnouts were so large that equipment was inadequate. As of Thanksgiving break, 41 frosh/novice athletes were turning out regularly. Coach Mike McQuaid says that this year's novices are one of the most talented groups he's seen.

McQuaid, head Frosh coach, is assisted by novice coach Chuck Purnell. This will be the first year that novices have not rowed with the varsity. So far the segregation seems to be mutually beneficial.

Greater competition for seats in the varsity boats has made the varsity fast early in the season. We have 40 returning oarsmen, so things will be intense in the spring. Assisting Struck with the varsity is Chad Campbell, a member of last year's West Coast Champion JV light boat.

On the Monday following the Head of the Spokane, we started dryland practice. Daily, we have nearly 100 people crammed into the mat room. The boxing room was taken from us for the expansion of the varsity weight room, which we still cannot use. Vice-commodore Ole Jorgenson shares leadership of workouts with Struck.

Struck played electrician this summer by wiring up the shell house.

We now have lights, and can see what we're doing when it's dark outside. Besides the

electricity, we now have a phone—for emergencies only. And the occasional pizza. By spring, we hope to have floodlights on the outside of the house.

Now that our facility is nearly complete, we are looking for ways to remind us of our past. If you have any ideas, we want to hear them. We appreciate your support and hope to see you at Class Day and other races. We're going to be fast! ▲

—Ernie Iseminger



*Men's officers: (L to R) Ernie Iseminger (comm.), Scott McAlear (treas.), Ole Jorgenson (v. comm.), Don Yule (P.R.)*

## Market crash shrinks endowment

When stocks began to nosedive in October, the ensuing panic in financial markets erased billions of dollars worth of assets as prices dropped. The Dow Jones average lost nearly 22% in two weeks. In a recent telephone interview, WSU business and finance officer Ken Abbey talked of the impact the crash has had on the WSU endowment portfolio.

Fortunately for WSU, managers handling the Endowment suspected the bull market was nearing its end and began pulling assets out of stocks and moving them to other markets such as municipal bonds and certificates of deposit, according to Abbey. Consequently, the overall impact of the decline on the Endowment was only about 7.5%. In real dollar terms, this means that the WSU portfolio shrank from about 15 million dollars to around 13.9 million.

In the WSU endowment system, individual accounts, such as the crew endowment, are calculated as a straight percentage of the entire portfolio, Abbey said. Thus the crew account, which was poised to break the \$19,000 mark at the beginning of November has moved back to around \$17,575. While this is not a devastating setback, it requires the CRA to redouble efforts on the 1987 drive.

Since the drive began in January, the CRA has received \$4,415 in pledges and contributions from 44 individuals. In order to meet the 1987 target of \$20,000, the fund must gain \$1,925 by December 31 in order to qualify for a contribution of \$500 which is pledged if we hit \$19,500. Let's do it. If you've sent something already, send a little more. If you haven't yet contributed, get out the checkbook. It's the best way to fight those Black Monday blues. ▲

## NEWS BRIEFS

Items of interest at the boathouse include three venerable old Pocock eights, recently acquired from a Husky house-cleaning. These cedar skinned shells, trailing clouds of glory, will probably not rest long in the Palouse. Six or seven years ago they would have been pieces of badly needed racing equipment. Today, with leaky hulls, groaning tracks, clunky riggers and whale-fluke rudders, they are, despite many victory chevrons, closer to museum pieces. The Captain reports that two shells will probably be sold to help cover the cost of a new plastic boat, planned for purchase in the spring.

Top-drawer equipment seems to drop from the Palouse skies these days. The Cougs have recently accepted two new sets of Dreissegacker fiberglass blades, one from the Parent's Association and the other from Kim Heggerness (80-84) and Brett Purtzer (79-81). Kim has finished her coaching stint at UPS, and Brett has finished law school. Rumor has it they plan a move to Seattle soon.

Another recent gift from the west side is a 1974 Reinell inboard-outboard suitable for use as a coaching launch. This vessel comes from Cliff Arney of Bellevue, father of a current crew-body. Many thanks!

The twentieth century has at last arrived at the Cougar shell house. The facility is now well-lit with fluorescent tubes, and on the west wall near the side door, is mounted an honest-to-God GTE touchtone. Best of all, utility and telephone bills will be picked up by University Physical Plant. Touche! Give the crew a call at: (509) 332-2937. ▲

**Address correction requested  
Return postage guaranteed**

Cougar Rowing Foundation  
17A-6250-2349  
B-19 Compton Union Building  
WSU  
Pullman, WA 99163-9986

Dec 29

NONPROFIT ORGANIZATION  
U.S. POSTAGE  
**PAID**  
PULLMAN, WA  
PERMIT NO. 1

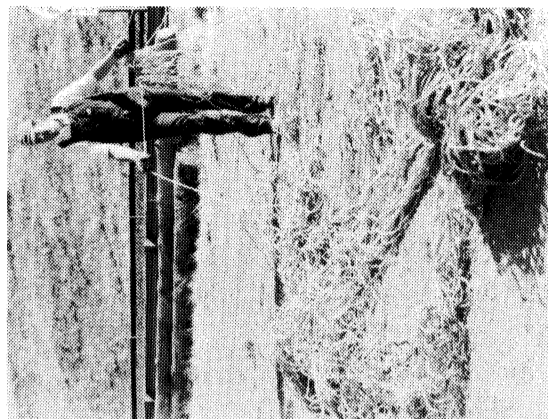


Tracy Voadset on the horn.  
Give the crew a call at 509-334-2957

**Head of the Spokane continued.**

the generosity of outside supporters, such as the recent hefty contribution from the WSU Parent's Association.

Also racing were Dr. Arthur Sachs (long-time crew booster and benefactor), Doug Engle and Tracy Pierson. Sachs placed second of six in the men's single while Engle was fourth. Pierson rowed a recreational single "for the second time ever" but failed to show in the large event. Pierson says he is alive and well in Spokane and (horror of horrors) works for a beer distributorship. —Roger Crawford ▲



Accourse + vandals = Polypro Spaghetti

recently, on Fern Ridge reservoir near Eugene, Oregon. Although the latest installation was a disaster, thanks to waterski vandals, the course brought in \$450 in rent to the CRA plus \$200 in material improvements.

A work party devoted to course maintenance will commence at the river on the Friday before Class Day. Volunteers welcome. Contact Doug at (509) 334-1530. ▲

**Race course rental to benefit CRA**

Among the modest accomplishments of the CRA was a short-lived regatta called Liberty Lake. This attempt to build a big-draw boat race within close range of Cougar home base was noble but premature. Liberty Lake hosted USRA regionals in 1983, a regatta of 1,000 athletes from 22 clubs, but that was the last time racing occurred there.

Liberty Lake didn't become the Henley of the Northwest racing circuit, but it left interesting mementos for the CRA to dispose of, including 500 of the ugliest T-shirts ever produced (would have created a sensation on David Letterman's show), and a rather hefty debt, owed to the USRA regional committee and to the wholesaler who had printed the unusual shirts. (The garments gave early evidence of limited saleability when a punker, admiring red trim and pink ink blurted: "Oh cool—they clash! I've got to have one.")

Fortunately, the CRA and Cougar Crew came out of the venture with something of value. The crew provided the labor to build a bouyed, seven-lane, 2,000 m. race course. Materials were secured at low cost by friends of the Liberty Lake race. The system has since been used three times on Green Lake in Seattle, and once, most



**MAIL BAG**

Tammy Boggs (80-84) is Head Novice Coach of the UW Women, and will be attending the USRA national convention in Florida in December. Tammy and Roger Crawford (82-86) are engaged. Another crew marriage.

Tim Malkow (75-79) is director and head coach of the Seattle City Park's Mt. Baker rowing program at Seward Park and will also be attending the convention

Lisa Coble-Curtis (79-81) and husband Craig, a pair of architects, are back in Seattle and settling into a new house.

Paul Hensel (82-86) is competing with the Seattle Rowing Club (formerly Falcon Rowing Club, out of the SPU facility). Paul recently returned from stroking the SRC heavies to 8th out of 36 in the Club Eights at the Head of the Charles. SRC coach is Bill Titus, formerly Light Coach at UW, now owner of Pocock Racing Shells. There are four ex-Huskies in the boat. Way to go, Paul!

Murry Etherington (78-81) is rowing at LWRC and raced novice single for the first time at the Frostbite regatta.

Kari and Steve Ranten welcomed a future oarsman into the world on September 6, 1987. Matthew Eric weighed in at 8 pounds, 5 ounces and measured 20.5 inches.

Andrea "Andy" Moore sends greetings from Hawaii. She is working for Northwest Airlines and is learning to surf at Waikiki.

**CRA: Tell us what you know**

The CRA wants to hear from you. Is there life after rowing? If so, tell us something of its quality. Hath it any particular relevance or romance? Hath it produced a spouse, or reproduced the species? Do tell us what you know that we don't.

Submissions are welcomed, including good photos and articles. The editors reserve traditional editorial rights, including slash and burn, free coffee and ugly mood swings. Please note copy deadlines for prompt publication of your Pulitzer-quality manuscript.

**Copy deadlines:** 1/14/88, 5/1/88, 8/1/88, 10/13/88

**Publication dates:** 2/14/88, 6/4/88, 9/3/88, 11/13/88

Annual CRA membership of ten dollars runs Class day to Class day and covers the cost of getting the *Pull Hard* out. It also helps subsidize alumni efforts to endow Cougar Crew. Quarterly meetings are open to all interested alumni. Contact Jim Rudd (206) 874-5852 or Tammy Boggs (206) 527-8775 for time and place.

Mail *Pull Hard* material and dues (assuming you want to read yourself in print) to:

**Cougar Rowing Association  
1319 Lei Garden Road  
Burlington, WA 98233**



**1987 Endowment Fund Contributors**

We would like to thank the following people who have sent or pledged contributions to the 1987 Endowment Fund Drive:

**Gold Oar (\$151 or more)**

- Arlene and John Bergstrom
- Sheri Bodman (VanCleaf)
- Sue Ernsdorff and Jim Pierce
- Jim Flynn
- Susan Ganz
- Andrew Kirk
- John Lafer
- Tim Malkow
- Peggy and Steve Porter
- Tim Richards

**Silver Oar (\$50 to \$150)**

- Blaine Beardsley
- Rich & Renee Bosco (Beauchamp)
- Kash VanCleaf
- Doug Engle
- Al Fisher
- Cheryl King
- Kathy Randall
- Kari and Steve Ranten
- Rich Ray
- Diane and Jim Rudd
- Donald C. Schmick
- Ray Wittmier

**Crimson Oar (to \$50)**

- Mr. & Mrs. E.S. Buringrud
- Tammy Boggs
- Lisa Coble-Curtis
- Tammy Cook
- Roger Crawford
- Gene Dowers
- Jane and Elvin Ericson
- Sandra and John Hensel
- Tom Kratzke
- Ingrid Jennings-Borroz
- Rich Lewis
- Alan A. Mackenzie

- Andrea Moore
- Mike Pabisz
- Margaret Staeheli
- Ted Russell
- Sue VanLeuvan
- Steve Vassey
- Anita VonOppenfeld
- Steve Wells
- Dave Yorozu
- Tim Zeiler

Donating to the crew through the WSU Foundation in 1987:

- Cynthia and Thomas Russell
- Dr. Arthur B. Sachs
- A.L. McAlister
- Donald C. Schmick
- Annette and Clark Minehart

We would also like to recognize the numerous friends and parents who donate directly to the WSU Crew and contribute their time, effort and resources in other ways that never reach the records of the CRA. We thank all those people for their generosity and support for the Cougar Crew program. A couple of recent supporters we do know about are:

- Valley Marine (Bryant Corp.)
- WSU Parent's Association
- A.L. McAlister
- Riley's Inc.
- Donald & Lily-Ann Satterlund
- Brett Purtzer and Kim Heggerness

